

Name: HALINE B2 IG65

Code: W58W

**THORN**

Linear In-ground Wall Washer Light

	CE	RoHS	CRI>80/90	IP 67	IK 09	T <sub>a</sub> -20 +40
--	----	------	-----------	-------	-------	---------------------------



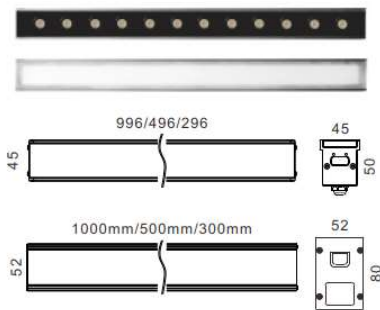
MODEL NO.	POWER	SYSTEM LUMEN	LED COLOR	BEAM ANGLE	INPUT VOLT	SIZE	CONTROL
HALINE B2 IG65 W58W	24W/36W	75 lm/w	2700K-5700K	10°/25°/45°/60° /100°/10°60°	AC240V /DC24V	1045*58*80MM	DALI/0-10V Triac
HALINE B2 IG65 W58W						1000*45*80MM	
HALINE B2 IG65 W58W		30 lm/w	RGB 3in1 DMX512 /RGBW 4in1 DMX512		1045*58*80MM		
HALINE B2 IG65 W58W					1000*45*80MM		

**FINISH**

LED:BRIDGELUX/OSRAM/CREE  
 Front ring of luminaire made of Tatanizing 304 stainless steel while lamp housing made of environmental and high tensile Extruded aluminum, suitable for high-acid and alkali environments use.  
 Ultra clear and highly strengthen 8mm tempered glass cover, ensure high luminous efficacy (90-95%) ,outstanding accuracy of color temperature, and excellent impact resistance and rub resistance.  
 Dimmable support:Triac/PWM/0-10V/DALI/DMX512

**MOUNTING**

Frameless Model



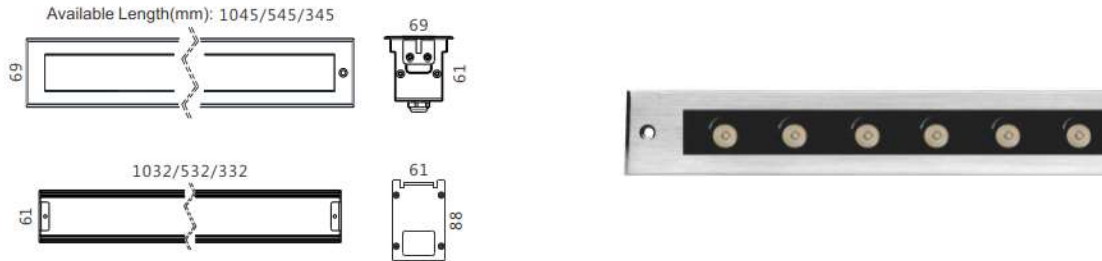
Name: HALINE B2 IG65

Code: W69W

**THORN**

Linear In-ground Wall Washer Light

	CE	RoHS	CRI>80/90	IP 67	IK 09	T <sub>a</sub> -20 +40
--	----	------	-----------	-------	-------	---------------------------



MODEL NO.	POWER	SYSTEM LUMEN	LED COLOR	BEAM ANGLE	INPUT VOLT	SIZE	CONTROL
HALINE B2 IG65 W69W	24W/48W	75 lm/w	2700K-5700K	10°/25°/45°/60° /100°/10°/60°	AC240V /DC24V	1045*69*88MM	DALI/0-10V Triac
HALINE B2 IG65 W69W						1000*61*88MM	
HALINE B2 IG65 W69W		30 lm/w	RGB 3in1 DMX512 /RGBW 4in1 DMX512		1045*69*88MM		
HALINE B2 IG65 W69W					1000*61*88MM		

LED: BRIDGELUX/OSRAM/CREE.

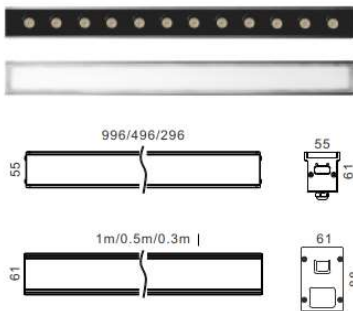
Front ring of luminaire made of Tatanizing 304 stainless steel while lamp housing made of environmental and high tensile Extruded aluminum, suitable for high-acid and alkali environments use.

**FINISH** Ultra clear and highly strengthen 8mm tempered glass cover, ensure high luminous efficacy (90-95 %) ,outstanding accuracy of color temperature, and excellent impact resistance and rub resistance.

Dimmable support: Triac/PWM/0-10V/DALI/DMX512

### MOUNTING

Frameless Model



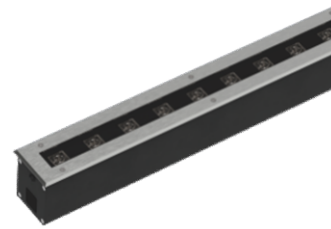
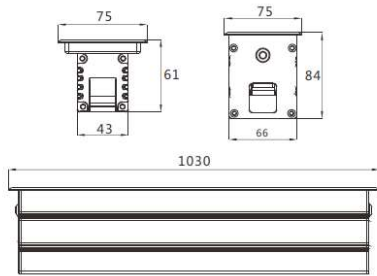
Name: HALINE B2 IG65

Code: W75W

**THORN**

Linear In-ground Wall Washer Light

CE	RoHS	CRI>80/90	IP 67	IK 09	$T_a$ -20 +40
----	------	-----------	-------	-------	------------------



1M/ 0.5M/0.3M Length/Unit Available

MODEL NO.	POWER	SYSTEM LUMEN	LED COLOR	BEAM ANGLE	INPUT VOLT	SIZE	CONTROL
HALINE B2 IG65 W75W	18*1W	75 lm/w	2700K-6000K	10°/15°/30°/45°/60° /10°60°/20°45° /18+55°Asymmetrical	AC220/DC24V	1050*75*84mm	DALI/0-10V Triac
HALINE B2 IG65 W75W	24*1W						
HALINE B2 IG65 W75W	36*1W	30 lm/w	RGB 3in1 DMX512		DC24V		
HALINE B2 IG65 W75W	18*2W	30 lm/w	RGBW 4in1 DMX512				
HALINE B2 IG65 W75W	24*2W	30 lm/w	RGBW 4in1 DMX512				

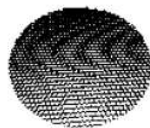
**CUT OUT:** 66mm

**FINISH**

LED:CREE/EPISTAR.  
 Front ring of luminaire made of Tetanizing 304 stainless steel while lamp housing made of environmental and high tensile Extruded aluminum, suitable for high-acid and alkali environments use.  
 Ultra clear and highly strengthen 8mm tempered glass cover, ensure high luminous efficacy (90-95%) ,outstanding accuracy of color temperature, and excellent impact resistance and rub resistance.  
 Power Cable:H05RN-F 2\*1.0mm<sup>2</sup> (low voltage).H05RN-F 3\*0.75mm<sup>2</sup> (high voltage).H05RN-F 5\*0.75mm<sup>2</sup>(RGB).  
 Dimmable support:Triac/PWM/0-10V/DALI/DMX512

**MOUNTING**

Honeycomb Louver



Half Covered Silk Glass



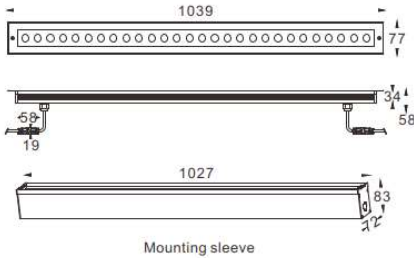
Name: HALINE B2 IG65

Code: W77W

**THORN**

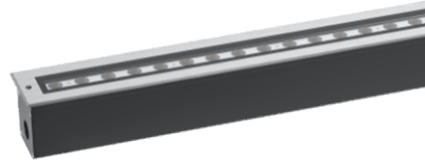
Linear In-ground Wall Washer Light

	CE	RoHS	CRI>80/90	IP 67	IK 09	T <sub>a</sub> -20 +40
--	----	------	-----------	-------	-------	---------------------------



Mounting sleeve

339MM/550MM/1039MM/1529MM Length/Unit Available



MODEL NO.	POWER	SYSTEM LUMEN	LED COLOR	BEAM ANGLE	INPUT VOLT	SIZE	CONTROL
HALINE B2 IG65 W77W	40W	75 lm/w	2700K-6000K	10°/15°/25° /35°/45° /10°60°/10°45° /10°30°	AC220/DC24V	1039*77*83MM	DALI/0-10V Triac
HALINE B2 IG65 W77W	10W						
HALINE B2 IG65 W77W	60W	30 lm/w	RGB 3in1 DMX512	20°/30°/20°45°	DC24V		
HALINE B2 IG65 W77W	80W	30 lm/w	RGBW 4in1 DMX512				

LED:CREE, LUMINUS LED.

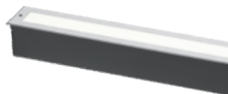
Front ring of luminaire made of Tetanizing 316 stainless steel while lamp housing made of environmental and high tensile Extruded aluminum, suitable for high-acid and alkali environments use.

**FINISH**

Ultra clear and highly strengthen 8mm tempered glass cover, ensure high luminous efficacy (90-95%), outstanding accuracy of color temperature, and excellent impact resistance and rub resistance.

Dimmable support: Triac/PWM/0-10V/DALI/DMX512

**MOUNTING**



Half Covered Silk Glass



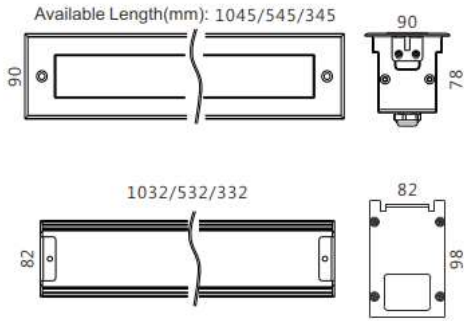
Name: HALINE B2 IG65

Code: W90x98W

**THORN**

Linear In-ground Wall Washer Light

	CE	RoHS	CRI>80/90	IP 67	IK 09	T <sub>a</sub> -20 +40
--	----	------	-----------	-------	-------	---------------------------



MODEL NO.	POWER	SYSTEM LUMEN	LED COLOR	BEAM ANGLE	INPUT VOLT	SIZE	CONTROL
HALINE B2 IG65 W90x98W	48W/72W	75 lm/w	2700K-5700K	10°/15°/25° /35°/45° /10°60°/10°45° /10°30°	AC220/DC24V	1045*90*98MM	DALI/0-10V Triac
HALINE B2 IG65 W90x98W						1000*75*98MM	
HALINE B2 IG65 W90x98W	30 lm/w	RGB 3in1 DMX512 /RGBW 4in1 DMX512	20°/30°/20°45°	AC240V /DC24V	1045*90*98MM		
HALINE B2 IG65 W90x98W					1000*75*98MM		

**FINISH**

LED:BRIDGELUX/OSRAM/CREE.

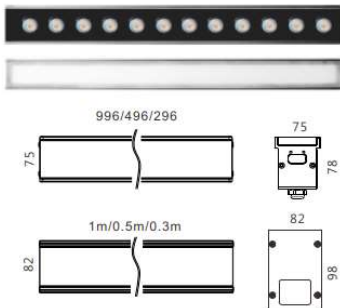
Front ring of luminaire made of Tetanizing 304 stainless steel while lamp housing made of environmental and high tensile Extruded aluminum, suitable for high-acid and alkali environments use.

Ultra clear and highly strengthen 8mm tempered glass cover, ensure high luminous efficacy (90-95 %) ,outstanding accuracy of color temperature, and excellent impact resistance and rub resistance.

Dimmable support:Triac/PWM/0-10V/DALI/DMX512

**MOUNTING**

Frameless Model



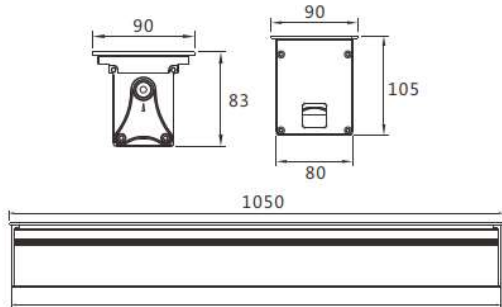
Name: HALINE B2 IG65

Code: W90x107W

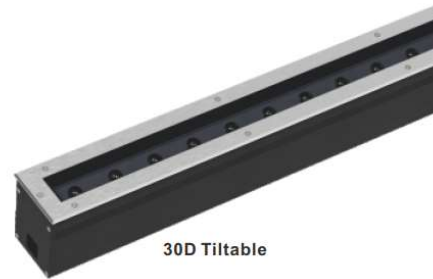
**THORN**

Linear In-ground Wall Washer Light

<b>CE</b>	<b>RoHS</b>	CRI>80/90	IP 67	IK 09	$T_a$ -20 +40
-----------	-------------	-----------	-------	-------	------------------



1M/ 0.5M length/Unit Available



30D Tilttable

MODEL NO.	POWER	SYSTEM LUMEN	LED COLOR	BEAM ANGLE	INPUT VOLT	CONTROL
HALINE B2 IG65 W90x107W	18*1W	75 lm/w	2700K-6000K	10°/15°/30°/ 45°/60°/ 10°60°/20°45°	AC220/DC24V	DALI/0-10V Triac
HALINE B2 IG65 W90x107W	24*1W					
HALINE B2 IG65 W90x107W	36*1W					
HALINE B2 IG65 W90x107W	18*2W	30 lm/w	RGB 3in1 DMX512		DC24V	
HALINE B2 IG65 W90x107W	24*2W	30 lm/w	RGBW 4in1 DMX512			

**CUT OUT:** 80mm

**FINISH**

LED:CREE/EPISTAR.

Front ring of luminaire made of Tatanizing 304 stainless steel while lamp housing made of environmental and high tensile Extruded aluminum, suitable for high-acid and alkali environments use.

Ultra clear and highly strengthen 8mm tempered glass cover, ensure high luminous efficacy (90-95%) ,outstanding accuracy of color temperature, and excellent impact resistance and rub resistance.

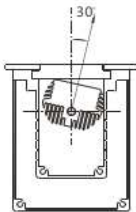
Power Cable:H05RN-F 2\*1.0mm<sup>2</sup> (low voltage).H05RN-F 3\*0.75mm<sup>2</sup> (high voltage).H05RN-F 5\*0.75mm<sup>2</sup>(RGB).

Dimmable support:Triac/PWM/0-10V/DALI/DMX512

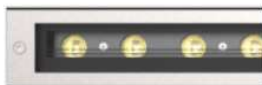
**MOUNTING**

30D Tilttable

Honeycomb Louve



Half Covered Silk Glass



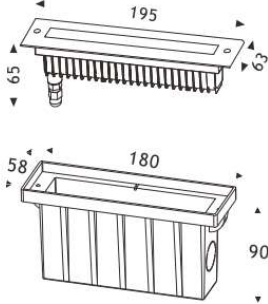
Name: HALINE B2 IG65

Code: R63x195W

**THORN**

Linear In-ground Wall Washer Light

	CE	RoHS	CRI>80/90	IP 67	IK 09	T <sub>a</sub> -20 +40
--	----	------	-----------	-------	-------	---------------------------



MODEL NO.	POWER	SYSTEM LUMEN	LED COLOR	BEAM ANGLE	INPUT VOLT	CONTROL
HALINE B2 IG65 R63x195W	6W	75 lm/w	2700K-6500K /R/G/B	10°/30°/45° 60°/45°35°	24V/12V DC240V/120V AC	DALI/0-10V Triac
HALINE B2 IG65 R63x195W	9W	30 lm/w	RGB 3in1 ,DMX512		24V/12V DC	
HALINE B2 IG65 R63x195W	2W	75 lm/w	2700K-6500K /R/G/B	Diffuser Beam 120°	24V/12V DC240V/120V AC	
HALINE B2 IG65 R63x195W	2.5W	30 lm/w	RGB 3in1 ,DMX512		24V/12V DC	

<b>CUT OUT:</b> 180*58mm	
<b>FINISH</b>	<p>LED:CREE/OSRAM/EPISTAR.</p> <p>Front ring of luminaire made of Tetanizing 316 stainless steel while lamp housing made of environmental and high tensile ACD12# die-casting aluminum, and the surface of lamp housing is with American Tiger Powder Paint Treatment, suitable for high-acid and alkali environments use.</p> <p>Ultra clear and highly strengthen 8mm tempered glass cover, ensure high luminous efficacy (90-95%) ,outstanding accuracy of color temperature, and excellent impact resistance and rub resistance.Power Cable:H05RN-F 2*1.0mm<sup>2</sup> (low voltage).H05RN-F 3*0.75mm<sup>2</sup> (high voltage).H05RN-F 4*0.75mm<sup>2</sup>(RGB3 in1).H05RN-F 5*0.5mm<sup>2</sup>(RGB3 in1 DMX512).</p> <p>Dimmable support:Triac/PWM/0-10V/DALI/DMX512</p>

**MOUNTING**

Honeycomb Louve



Milky White/Frosted Cover



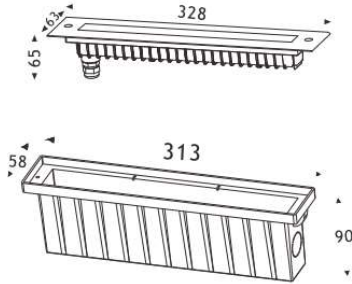
Name: HALINE B2 IG65

Code: R63x328W

**THORN**

Linear In-ground Wall Washer Light

	CE	RoHS	CRI>80/90	IP 67	IK 09	T <sub>a</sub> -20 +40
--	----	------	-----------	-------	-------	---------------------------



MODEL NO.	POWER	SYSTEM LUMEN	LED COLOR	BEAM ANGLE	INPUT VOLT	CONTROL
HALINE B2 IG65 R63x328W	12W	75 lm/w	2700K-6500K /R/G/B	10°/30°/45° 60°/45°35°	24V/12V DC240V/120V AC	DALI/0-10V Triac
HALINE B2 IG65 R63x328W	18W	30 lm/w	RGB 3in1 ,DMX512		24V/12V DC	
HALINE B2 IG65 R63x328W	4W	75 lm/w	2700K-6500K /R/G/B	Diffuser Beam 120°	24V/12V DC240V/120V AC	
HALINE B2 IG65 R63x328W	5W	30 lm/w	RGB 3in1 ,DMX512		24V/12V DC	

<b>CUT OUT:</b> 313*58mm	
<b>FINISH</b>	<p>LED:CREE/OSRAM/EPISTAR.</p> <p>Front ring of luminaire made of Tetanizing 316 stainless steel while lamp housing made of environmental and high tensile ACD12# die-casting aluminum, and the surface of lamp housing is with American Tiger Powder Paint Treatment, suitable for high-acid and alkali environments use.</p> <p>Ultra clear and highly strengthen 8mm tempered glass cover, ensure high luminous efficacy (90-95%) ,outstanding accuracy of color temperature, and excellent impact resistance and rub resistance.</p> <p>Power Cable:H05RN-F 2*1.0mm<sup>2</sup> (low voltage).H05RN-F 3*0.75mm<sup>2</sup> (high voltage).H05RN-F 4*0.75mm<sup>2</sup>(RGB3 in1),H05RN-F 5*0.5mm<sup>2</sup>(RGB3 in1 DMX512).</p> <p>Dimmable support:Triac/PWM/0-10V/DALI/DMX512</p>

**MOUNTING**

Honeycomb Louve



Milky White/Frosted Cover





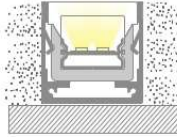
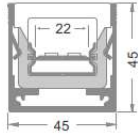
Name: HALINE B2 PL54

Code: W45x45D

**THORN**

Soft Beam Linear Inground Light

	CE	RoHS	CRI>80/90	IP 67	IK 09	T <sub>a</sub> -20 +40
--	----	------	-----------	-------	-------	---------------------------



Physical Dimension(MM)

Max. 3M length / Unit

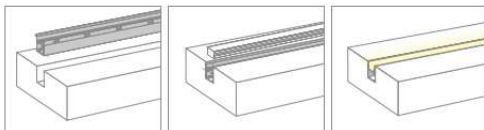
MODEL NO.	POWER	SYSTEM LUMEN	LED COLOR	BEAM ANGLE	INPUT VOLT	SIZE	CONTROL
HALINE B2 PL54 W45x45D	9W	80 lm/w	2400K-6500K	Diffuser soft beam 120°	24V DC	300*45*45mm	1-10V/ PWM Triac/DMX
HALINE B2 PL54 W45x45D	15W					500*45*45mm	
HALINE B2 PL54 W45x45D	18W					600*45*45mm	
HALINE B2 PL54 W45x45D	30W					1000*45*45mm	
HALINE B2 PL54 W45x45D	36W					1200*45*45mm	

**FINISH**

IP67 LED profile  
 suit for indoor or outdoor light decoration linear light design , homogeneous and dots free  
 Installation: recessed or surface mounting  
 Cable output: from the bottom or end  
 IP rating: Ip67  
 Maximum 30W/m  
 UV resistance  
 Maximum stand weight: 30kN

**MOUNTING**

Honeycomb Louve



Aluminum profile



PMMA one time extrusion profile



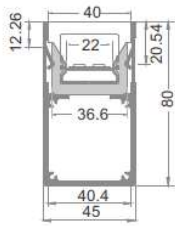
Name: HALINE B2 PL54

Code: W40x80D

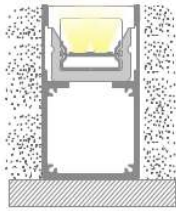
**THORN**

Soft Beam Linear Inground Light

	CE	RoHS	CRI>80/90	IP 67	IK 09	T <sub>a</sub> -20 +40
--	----	------	-----------	-------	-------	---------------------------



Physical Dimension(MM)



Max. 3M length / Unit

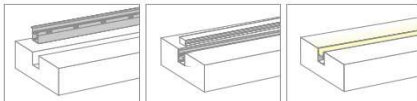
MODEL NO.	POWER	SYSTEM LUMEN	LED COLOR	BEAM ANGLE	INPUT VOLT	SIZE	CONTROL
HALINE B2 PL54 W40x80D	9W	80 lm/w	2400K-6500K	Diffuser soft beam 120°	24V DC	300*45*80mm	1-10V/ PWM Triac/DMX
HALINE B2 PL54 W40x80D	15W					500*45*80mm	
HALINE B2 PL54 W40x80D	18W					600*45*80mm	
HALINE B2 PL54 W40x80D	30W					1000*45*80mm	
HALINE B2 PL54 W40x80D	36W					1200*45*80mm	

**FINISH**

IP67 LED profile  
 suit for indoor or outdoor light decoration linear light design , homogeneous and dots free  
 Installation: recessed or surface mounting  
 Cable output: from the bottom or end  
 IP rating: Ip67  
 Maximum 30W/m  
 UV resistance  
 Maximum stand weight: 30kN

**MOUNTING**

Installation Method



Aluminum profile



PMMA one time extrusion profile



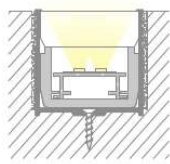
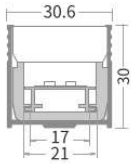
Name: HALINE B2 PL54

Code: W30.6x30D

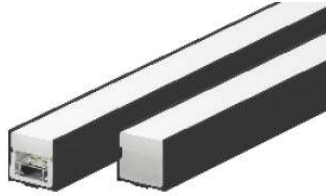
**THORN**

Soft Beam Linear Inground Light

	<b>CE</b>	<b>RoHS</b>	<b>CRI&gt;80/90</b>	<b>IP 67</b>	<b>IK 09</b>	<b>T<sub>a</sub>-20 +40</b>
--	-----------	-------------	---------------------	--------------	--------------	---------------------------------



Physical Dimension(MM)



Max. 3M length / Unit

MODEL NO.	POWER	SYSTEM LUMEN	LED COLOR	BEAM ANGLE	INPUT VOLT	SIZE	CONTROL
HALINE B2 PL54 W30.6x30D	6W	80 lm/w	2400K-6500K	Diffuser soft beam 110°	24V DC	300*30.6*30mm	1-10V/ PWM Triac/DMX
HALINE B2 PL54 W30.6x30D	10W					500*30.6*30mm	
HALINE B2 PL54 W30.6x30D	12W					600*30.6*30mm	
HALINE B2 PL54 W30.6x30D	20W					1000*30.6*30mm	
HALINE B2 PL54 W30.6x30D	24W					1200*30.6*30mm	

**FINISH**

IP67 LED profile  
 suit for indoor or outdoor light decoration linear light design , homogeneous and dots free  
 Installation: recessed or surface mounting  
 Cable output: from the bottom or end  
 IP rating: Ip67  
 Maximum 20W/m  
 UV resistance  
 Maximum stand weight: 30kN

**MOUNTING**



Aluminum profile



PMMA one time extrusion profile



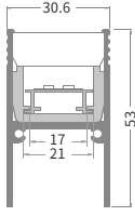
Name: HALINE B2 PL54

Code: W30.6x53D

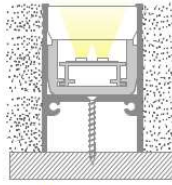
**THORN**

Soft Beam Linear Inground Light

	CE	RoHS	CRI>80/90	IP 67	IK 09	T <sub>a</sub> -20 +40
--	----	------	-----------	-------	-------	---------------------------



Physical Dimension(MM)



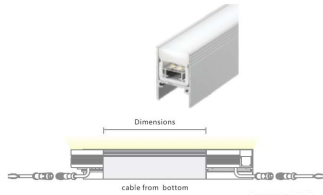
Max. 3M length / Unit

MODEL NO.	POWER	SYSTEM LUMEN	LED COLOR	BEAM ANGLE	INPUT VOLT	SIZE	CONTROL
HALINE B2 PL54 W30.6x53D	6W	80 lm/w	2400K-6500K	Diffuser soft beam 110°	24V DC	300*30.6*53mm	1-10V/ PWM Triac/DMX
HALINE B2 PL54 W30.6x53D	10W					500*30.6*53mm	
HALINE B2 PL54 W30.6x53D	12W					600*30.6*53mm	
HALINE B2 PL54 W30.6x53D	20W					1000*30.6*53mm	
HALINE B2 PL54 W30.6x53D	24W					1200*30.6*53mm	

**FINISH**

IP67 LED profile  
 suit for indoor or outdoor light decoration linear light design , homogeneous and dots free  
 Installation: recessed or surface mounting  
 Cable output: from the bottom or end  
 IP rating: Ip67  
 Maximum 20W/m  
 UV resistance  
 Maximum stand weight: 30kN

**MOUNTING**



Aluminum profile,6063 aluminum material  
 anodized or Powder coating finished  
 1m,2m,3m length,Customized length is  
 available on request



PMMA one time extrusion profile,maximum  
 can be 3meter length.Customized length is  
 available on request



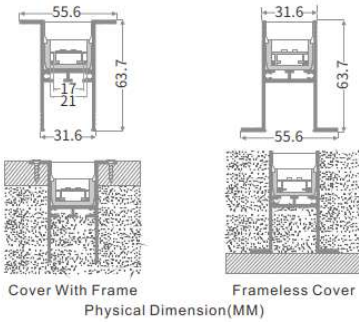
Name: HALINE B2 PL54

Code: W55.6D

**THORN**

Soft Beam Linear Inground Light

	CE	RoHS	CRI>80/90	IP 67	IK 09	T <sub>a</sub> -20 +40
--	----	------	-----------	-------	-------	---------------------------

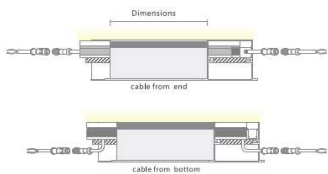


MODEL NO.	POWER	SYSTEM LUMEN	LED COLOR	BEAM ANGLE	INPUT VOLT	SIZE	CONTROL
HALINE B2 PL54 W55.6D	6W	80 lm/w	2400K-6500K	Diffuser soft beam 110°	24V DC	300*55.6*63.7mm	1-10V/ PWM Triac/DMX
HALINE B2 PL54 W55.6D	10W					500*55.6*63.7mm	
HALINE B2 PL54 W55.6D	12W					600*55.6*63.7mm	
HALINE B2 PL54 W55.6D	20W					1000*55.6*63.7mm	
HALINE B2 PL54 W55.6D	24W					1200*55.6*63.7mm	

**FINISH**

IP67 LED profile  
 suit for indoor or outdoor light decoration linear light design , homogeneous and dots free  
 Installation: recessed or surface mounting  
 Cable output: from the bottom or end  
 IP rating: Ip67  
 Maximum 20W/m  
 UV resistance  
 Maximum stand weight: 30kN

**MOUNTING**



Aluminum profile,6063 aluminum material  
 anodized or Powder coating finished  
 1m,2m,3m length,Customized length is  
 available on request



PMMA one time extrusion profile,maximum  
 can be 3meter length.Customized length is  
 available on request



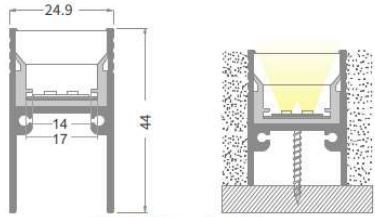
Name: HALINE B2 PL54

Code: W24.9D

**THORN**

Soft Beam Linear Inground Light

	CE	RoHS	CRI>80/90	IP 67	IK 09	T <sub>a</sub> -20 +40
--	----	------	-----------	-------	-------	---------------------------



Physical Dimension(MM)



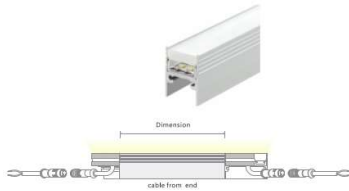
Max. 3M length / Unit

MODEL NO.	POWER	SYSTEM LUMEN	LED COLOR	BEAM ANGLE	INPUT VOLT	SIZE	CONTROL
HALINE B2 PL54 W24.9D	4.5W	80 lm/w	2400K-6500K	Diffuser soft beam 110°	24V DC	300*24.9*44mm	1-10V/ PWM Triac/DMX
HALINE B2 PL54 W24.9D	7.5W					500*24.9*44mm	
HALINE B2 PL54 W24.9D	9W					600*24.9*44mm	
HALINE B2 PL54 W24.9D	15W					1000*24.9*44mm	
HALINE B2 PL54 W24.9D	18W					1200*24.9*44mm	

**FINISH**

IP67 LED profile  
 suit for indoor or outdoor light decoration linear light design , homogeneous and dots free  
 Installation: recessed or surface mounting  
 Cable output: from the bottom or end  
 IP rating: Ip67  
 Maximum 20W/m  
 UV resistance  
 Maximum stand weight: 30kN

**MOUNTING**



Aluminum profile,6063 aluminum material  
 anodized or Powder coating finished  
 1m,2m,3m length,Customized length is  
 available on request



PMMA one time extrusion profile 1m,2m and  
 3m lengths.Customized length is available on  
 request



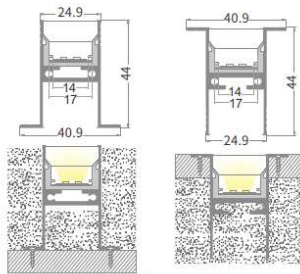
Name: HALINE B2 PL54

Code: W40.9D

**THORN**

Soft Beam Linear Inground Light

	CE	RoHS	CRI>80/90	IP 67	IK 09	T <sub>a</sub> -20 +40
--	----	------	-----------	-------	-------	---------------------------



Physical Dimension(MM)



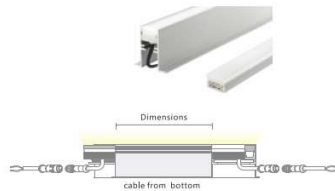
Max. 3M length / Unit

MODEL NO.	POWER	SYSTEM LUMEN	LED COLOR	BEAM ANGLE	INPUT VOLT	SIZE	CONTROL
HALINE B2 PL54 W40.9D	4.5W	80 lm/w	2400K-6500K	Diffuser soft beam 110°	24V DC	300*40.9*44mm	1-10V/ PWM Triac/DMX
HALINE B2 PL54 W40.9D	7.5W					500*40.9*44mm	
HALINE B2 PL54 W40.9D	9W					600*40.9*44mm	
HALINE B2 PL54 W40.9D	15W					1000*40.9*44mm	
HALINE B2 PL54 W40.9D	18W					1200*40.9*44mm	

**FINISH**

IP67 LED profile  
 suit for indoor or outdoor light decoration linear light design , homogeneous and dots free  
 Installation: recessed or surface mounting  
 Cable output: from the bottom or end  
 IP rating: Ip67  
 Maximum 15W/m  
 UV resistance  
 Maximum stand weight: 24.2kN

**MOUNTING**



Aluminum profile,6063 aluminum material  
 anodized or Powder coating finished  
 1m,2m,3m length,Customized length is  
 available on request



PMMA one time extrusion profile 1m,2m and  
 3m lengths.Customized length is available on  
 request



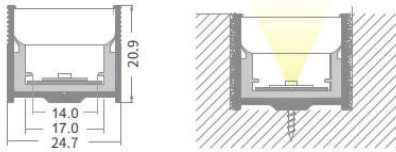
Name: HALINE B2 PL54

Code: W24.7D

**THORN**

Soft Beam Linear Inground Light

	CE	RoHS	CRI>80/90	IP 67	IK 09	T <sub>a</sub> -20 +40
--	----	------	-----------	-------	-------	---------------------------



Physical Dimension(MM)



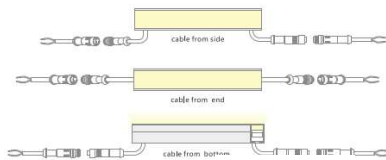
Max. 3M length / Unit

MODEL NO.	POWER	SYSTEM LUMEN	LED COLOR	BEAM ANGLE	INPUT VOLT	SIZE	CONTROL
HALINE B2 PL54 W24.7D	4.5W	80 lm/w	2400K-6500K	Diffuser soft beam 110°	24V DC	300*24.7*20.7mm	1-10V/ PWM Triac/DMX
HALINE B2 PL54 W24.7D	7.5W					500*24.7*20.7mm	
HALINE B2 PL54 W24.7D	9W					600*24.7*20.7mm	
HALINE B2 PL54 W24.7D	15W					1000*24.7*20.7mm	
HALINE B2 PL54 W24.7D	18W					1200*24.7*20.7mm	

**FINISH**

IP67 LED profile  
 suit for indoor or outdoor light decoration linear light design , homogeneous and dots free  
 Installation: recessed or surface mounting  
 Cable output: from the bottom or end  
 IP rating: Ip67  
 Maximum 15W/m  
 UV resistance  
 Maximum stand weight: 24.2kN

**MOUNTING**



Aluminum profile,6063 aluminum material  
 anodized or Powder coating finished  
 1m,2m,3m length,Customized length is  
 available on request



PMMA one time extrusion profile 1m,2m and  
 3m lengths.Customized length is available on  
 request





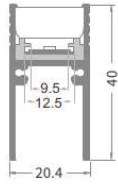
Name: **HALINE B2 PL54**

Code: **W20.4D**

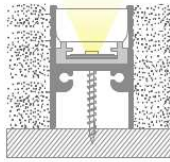
**THORN**

Soft Beam Linear Inground Light

	<b>CE</b>	<b>RoHS</b>	<b>CRI&gt;80/90</b>	<b>IP 67</b>	<b>IK 09</b>	<b>T<sub>a</sub>-20 +40</b>
--	-----------	-------------	---------------------	--------------	--------------	---------------------------------



Physical Dimension(MM)



Max. 3M length / Unit

MODEL NO.	POWER	SYSTEM LUMEN	LED COLOR	BEAM ANGLE	INPUT VOLT	SIZE	CONTROL
HALINE B2 PL54 W20.4D	3W	80 lm/w	2400K-6500K	Diffuser soft beam 110°	24V DC	300*20.4*40mm	1-10V/ PWM Triac/DMX
HALINE B2 PL54 W20.4D	5W					500*20.4*40mm	
HALINE B2 PL54 W20.4D	6W					600*20.4*40mm	
HALINE B2 PL54 W20.4D	10W					1000*20.4*40mm	
HALINE B2 PL54 W20.4D	12W					1200*20.4*40mm	

**FINISH**

*IP67 LED profile  
suit for indoor or outdoor light decoration linear light design , homogeneous and dots free  
Installation: recessed or surface mounting  
Cable output: from the bottom or end  
IP rating: Ip67  
Maximum 10W/m  
UV resistance  
Maximum stand weight: 16.4kN*

**MOUNTING**



cable from bottom

Aluminum profile,6063 aluminum material anodized or Powder coating finished 1m,2m,3m length,Customized length is available on request



PMMA one time extrusion profile 1m,2m 3m length.Customized length is available on request



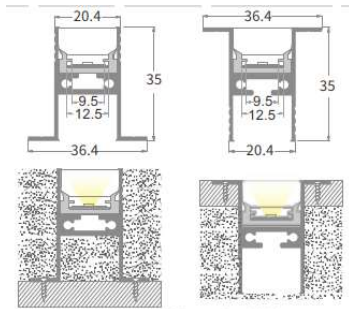
Name: HALINE B2 PL54

Code: W36.4D

**THORN**

Soft Beam Linear Inground Light

	<b>CE</b>	<b>RoHS</b>	<b>CRI&gt;80/90</b>	<b>IP 67</b>	<b>IK 09</b>	<b>T<sub>a</sub>-20 +40</b>
--	-----------	-------------	---------------------	--------------	--------------	---------------------------------



Physical Dimension(MM)



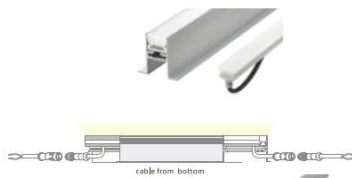
Max. 3M length / Unit

MODEL NO.	POWER	SYSTEM LUMEN	LED COLOR	BEAM ANGLE	INPUT VOLT	SIZE	CONTROL
HALINE B2 PL54 W36.4D	3W	80 lm/w	2400K-6500K	Diffuser soft beam 110°	24V DC	300*36.4*35mm	1-10V/ PWM Triac/DMX
HALINE B2 PL54 W36.4D	5W					500*36.4*35mm	
HALINE B2 PL54 W36.4D	6W					600*36.4*35mm	
HALINE B2 PL54 W36.4D	10W					1000*36.4*35mm	
HALINE B2 PL54 W36.4D	12W					1200*36.4*35mm	

**FINISH**

IP67 LED profile  
 suit for indoor or outdoor light decoration linear light design , homogeneous and dots free  
 Installation: recessed or surface mounting  
 Cable output: from the bottom or end  
 IP rating: Ip67  
 Maximum 10W/m  
 UV resistance  
 Maximum stand weight: 16.4kN

**MOUNTING**



Aluminum profile,6063 aluminum material  
 anodized or Powder coating finished  
 1m,2m,3m length,Customized length is  
 available on request



PMMA one time extrusion profile 1m,2m 3m  
 length.Customized length is available on  
 request



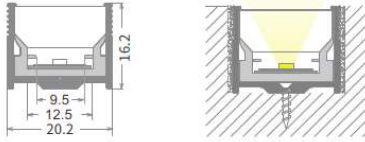
Name: HALINE B2 PL54

Code: W20.2D

**THORN**

Soft Beam Linear Inground Light

	CE	RoHS	CRI>80/90	IP 67	IK 09	Ta-20 +40
--	----	------	-----------	-------	-------	--------------



Physical Dimension(MM)



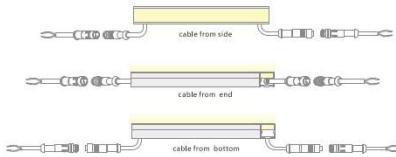
Max. 3M length / Unit

MODEL NO.	POWER	SYSTEM LUMEN	LED COLOR	BEAM ANGLE	INPUT VOLT	SIZE	CONTROL
HALINE B2 PL54 W20.2D	3W	80 lm/w	2400K-6500K	Diffuser soft beam 110°	24V DC	300*20.2*16.2mm	1-10V/ PWM Triac/DMX
HALINE B2 PL54 W20.2D	5W					500*20.2*16.2mm	
HALINE B2 PL54 W20.2D	6W					600*20.2*16.2mm	
HALINE B2 PL54 W20.2D	10W					1000*20.2*16.2mm	
HALINE B2 PL54 W20.2D	12W					1200*20.2*16.2mm	

**FINISH**

IP67 LED profile  
 suit for indoor or outdoor light decoration linear light design , homogeneous and dots free  
 Installation: recessed or surface mounting  
 Cable output: from the bottom or end  
 IP rating: Ip67  
 Maximum 10W/m  
 UV resistance  
 Maximum stand weight: 16.4kN

**MOUNTING**



Aluminum profile,6063 aluminum material  
 anodized or Powder coating finished  
 1m,2m,3m length,Customized length is  
 available on request



PMMA one time extrusion profile 1m,2m 3m  
 length.Customized length is available on  
 request



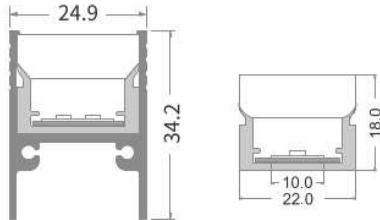
Name: HALINE B2 PL54

Code: W24.9D

**THORN**

Soft Beam Linear Inground Light

CE	RoHS	CRI>80/90	IP 67	IK 09	T <sub>a</sub> -20 +40
----	------	-----------	-------	-------	---------------------------



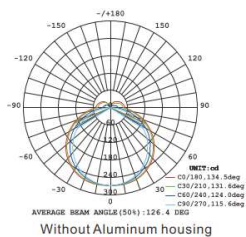
MODEL NO.	POWER	SYSTEM LUMEN	LED COLOR	BEAM ANGLE	INPUT VOLT	CONTROL
HALINE B2 PL54 W24.9D	15W	80 lm/w	2500K-6000K	Without Aluminum housing 130° With Aluminum housing 110°	24V DC	DALI/0-10V Triac

**FINISH**

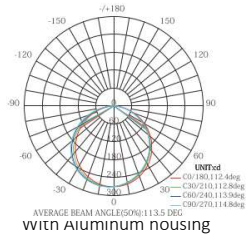
Lamp HOUSING MATERIAL:PMMA  
 LED:HONGLI  
 IP68 LED LINEAR LIGHT  
 Application: suit for indoor or outdoor light decoration  
 Working Temperature:-20 °C ~ +45 can be used in swimming pool with water depth less than 5 meters

**MOUNTING**

Light Distribution Curve



Without Aluminum housing



with Aluminum housing

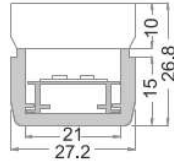
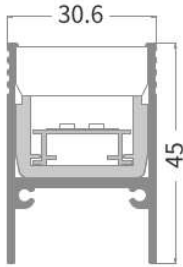
Name: HALINE B2 PL54

Code: W30.6D

**THORN**

Soft Beam Linear Inground Light

<b>CE</b>	<b>RoHS</b>	CRI>80/90	IP 67	IK 09	T <sub>a</sub> -20 +40
-----------	-------------	-----------	-------	-------	---------------------------

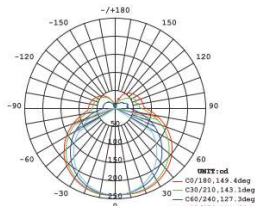


MODEL NO.	POWER	SYSTEM LUMEN	LED COLOR	BEAM ANGLE	INPUT VOLT	CONTROL
HALINE B2 PL54 W30.6D	20W	80 lm/w	2500K-6000K	Without Aluminum housing 130° With Aluminum housing 110°	24V DC	DALI/0-10V Triac

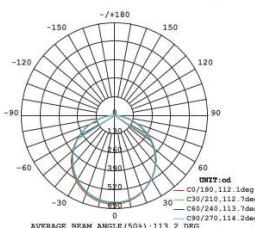
<b>FINISH</b>	<p>Lamp housing material:PMMA LED:hongli IP68 LED LINEAR LIGHT Application: suit for indoor or outdoor light decoration Working Temperature:-20 °C~ +45 can be used in swimming pool with water depth less than 5 meters</p>
---------------	--

**MOUNTING**

Light Distribution Curve



Without Aluminum housing



With Aluminum housing

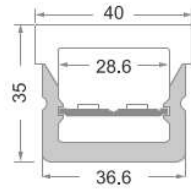
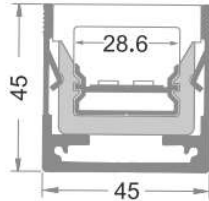
Name: HALINE B2 PL54

Code: W45D

**THORN**

Soft Beam Linear Inground Light

<b>CE</b>	<b>RoHS</b>	CRI>80/90	IP 67	IK 09	T <sub>a</sub> -20 +40
-----------	-------------	-----------	-------	-------	---------------------------

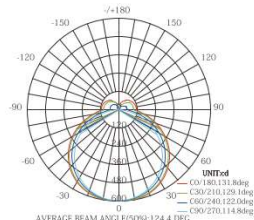


MODEL NO.	POWER	SYSTEM LUMEN	LED COLOR	BEAM ANGLE	INPUT VOLT	CONTROL
HALINE B2 PL54 W45D	30W	80 lm/w	2500K-6000K	Without Aluminum housing 120° With Aluminum housing 110°	24V DC	DALI/0-10V Triac

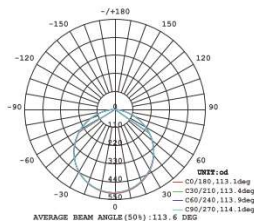
<p><b>FINISH</b></p>	<p>Lamp housing material: PMMA LED: hongli IP68 LED LINEAR LIGHT Application: suit for indoor or outdoor light decoration Working Temperature: -20°C ~ +45 can be used in swimming pool with water depth less than 5 meters</p>
----------------------	---

**MOUNTING**

Light Distribution Curve



Without Aluminum housing



With Aluminum housing

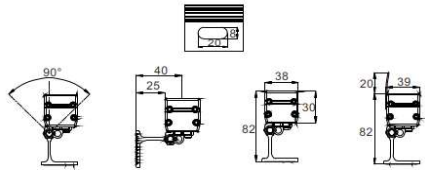
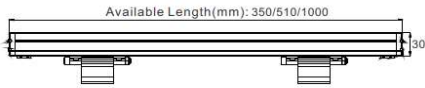
Name: HALINE B2 SF50

Code: W30x82W

**THORN**

Linear Wall Washer Light

CE	RoHS	CRI>80/90	IP 66	IK 08	$T_a$ -20 +40
----	------	-----------	-------	-------	------------------



Physical Dimension(MM)



MODEL NO.	POWER	SYSTEM LUMEN	LED COLOR	BEAM ANGLE	INPUT VOLT	CONTROL
HALINE B2 SF50 W30x82W	18W	75 lm/w	Monocolor/DMX	10°/15°/30°/45°/60° Asymmetrical Lens 18°*55°/20°*45°/10°*60° Symmetrical Lens	DC24V	DALI/0-10V Triac
HALINE B2 SF50 W30x82W	24W					
HALINE B2 SF50 W30x82W	36W					
HALINE B2 SF50 W30x82W	36W	30 lm/w	RGB 3in1 RGBW 4in1 DMX512			
HALINE B2 SF50 W30x82W	48W					

Housing: Extruded 6063 aluminum alloy profile, Electrostatic powder coated

LED: CREE, OSRAM, EPISTAR LED

Glass Cover: Step tempered glass. T= 4mm

Lens: Optical Lens, efficiency≥85%

Bracket: 6063# ALUMINUM, powder coatd.

Power Cable: H05RN-F 2\*1.0mm<sup>2</sup> L=0.3M ( Low voltage)

H05RN-F 3\*0.75mm<sup>2</sup> L=0.3M ( High voltage)

H05RN-F 2\*0.75mm<sup>2</sup> power cable +H05RN-F 3\*0.5mm<sup>2</sup> signal cable

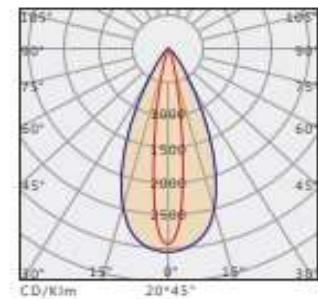
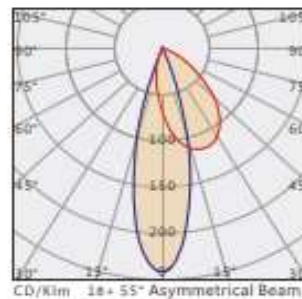
L=0.3M (DC24V RGB/RGBW, DMX512)

Operating Temperature: -20 °C~40 °C

**FINISH**

**MOUNTING**

Optional Model/Details



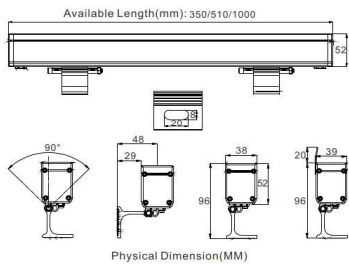
Name: HALINE B2 SF50

Code: W52W

# THORN

Linear Wall Washer Light

		CRI>80/90	IP 66	IK 08	T <sub>a</sub> -20 +40
--	--	-----------	-------	-------	---------------------------



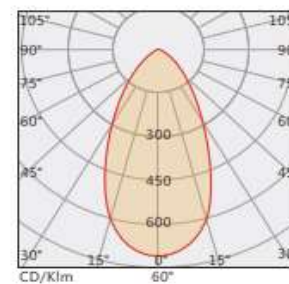
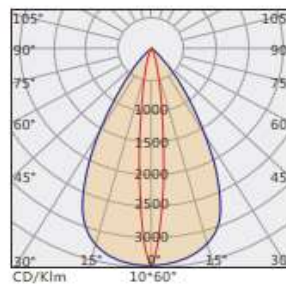
MODEL NO.	POWER	SYSTEM LUMEN	LED COLOR	BEAM ANGLE	INPUT VOLT	CONTROL
HALINE B2 SF50 W52W	18W	75 lm/w	Monocolor/DMX	10°/15°/30°/45°/60° Asymmetrical Lens 18°/55°/20°/45°/10°/60° Symmetrical Lens*	AC220V /DC24V	DALI/0-10V Triac
HALINE B2 SF50 W52W	24W					
HALINE B2 SF50 W52W	36W					
HALINE B2 SF50 W52W	36W	30 lm/w	RGB 3in1 RGBW 4in1 DMX512			
HALINE B2 SF50 W52W	48W					

**FINISH**

Housing: Extruded 6063 aluminum alloy profile, Electrostatic powder coated  
 LED: CREE, OSRAM, EPISTAR LED  
 Glass Cover: Step tempered glass. T= 4mm  
 Lens: Optical Lens, efficiency≥85%  
 Bracket: 6063# ALUMINUM, powder coatd.  
 Power Cable: H05RN-F 2\*1.0mm<sup>2</sup> L=0.3M ( Low voltage)  
 H05RN-F 3\*0.75mm<sup>2</sup> L=0.3M ( High voltage)  
 H05RN-F 2\*0.75mm<sup>2</sup> power cable +H05RN-F 3\*0.5mm<sup>2</sup> signal cable L=0.3M (DC24V RGB/RGBW, DMX512)  
 Operating Temperature: -20 °C~40 °C

## MOUNTING

Optional Model/Details





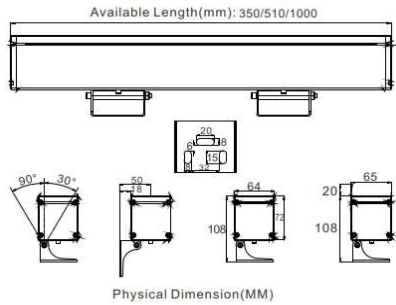
Name: HALINE B2 SF50

Code: W72W

**THORN**

Linear Wall Washer Light

<b>CE</b>	<b>RoHS</b>	CRI>80/90	IP 66	IK 08	T <sub>a</sub> -20 +40
-----------	-------------	-----------	-------	-------	---------------------------



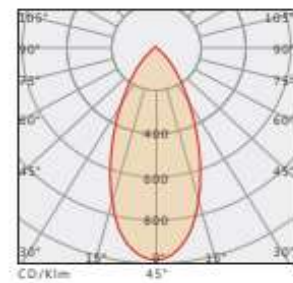
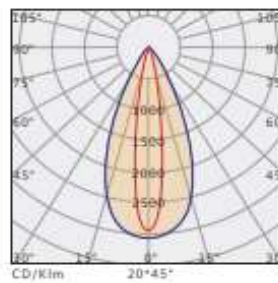
MODEL NO.	POWER	SYSTEM LUMEN	LED COLOR	BEAM ANGLE	INPUT VOLT	CONTROL
HALINE B2 SF50 W72W	48W	75 lm/w	Monocolor/DMX	10°/15°/30°/45°/60°/ Symmetrical Lens 18°55°/20°45°/10°60° Asymmetrical Lens	AC220V /DC24V	DALI/0-10V Triac
HALINE B2 SF50 W72W	72W					
HALINE B2 SF50 W72W	72W	30 lm/w	RGB 3in1 RGBW 4in1 DMX512			
HALINE B2 SF50 W72W	96W					

**FINISH**

Housing: Extruded 6063 aluminum alloy profile, Electrostatic powder coated  
 LED: CREE, OSRAM, EPISTAR LED  
 Glass Cover: Step tempered glass. T= 4mm  
 Lens: Optical Lens, efficiency≥85%  
 Bracket: 6063# ALUMINUM, powder coatd.  
 Power Cable: H05RN-F 2\*1.0mm2 L=0.3M ( Low voltage)  
 H05RN-F 3\*0.75mm2 L=0.3M ( High voltage)  
 H05RN-F 2\*0.75mm2 power cable +H05RN-F 3\*0.5mm2 signal cable  
 L=0.3M (DC24V RGB/RGBW, DMX512)  
 Operating Temperature: -20°C~40°C

**MOUNTING**

Optional Model/Details



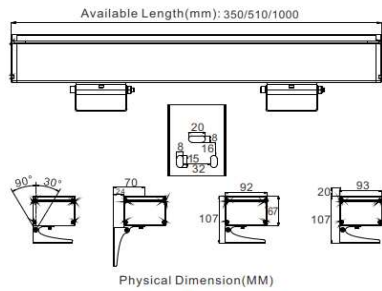
Name: HALINE B2 SF50

Code: W67W

**THORN**

Linear Wall Washer Light

		CRI>80/90	IP 66	IK 08	T <sub>a</sub> -20 +40
--	--	-----------	-------	-------	---------------------------



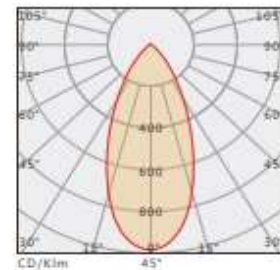
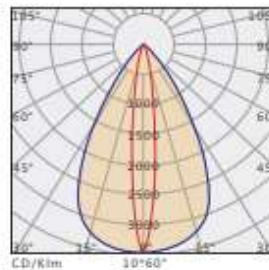
MODEL NO.	POWER	SYSTEM LUMEN	LED COLOR	BEAM ANGLE	INPUT VOLT	CONTROL
HALINE B2 SF50 W67W	108W	75 lm/w	Monocolor/DMX	10°/15°/30°/45°/60°/ Symmetrical Lens 18°55°/20°45°/10°60° Asymmetrical Lens	AC220V /DC24V	DALI/0-10V Triac
HALINE B2 SF50 W67W	108W	30 lm/w	RGB 3in1			
HALINE B2 SF50 W67W	144W		RGBW 4in1 DMX512			

**FINISH**

Housing: Extruded 6063 aluminum alloy profile, Electrostatic powder coated  
 LED: CREE, OSRAM, EPISTAR LED  
 Glass Cover: Step tempered glass. T= 4mm  
 Lens: Optical Lens, efficiency≥85%  
 Bracket: 6063# ALUMINUM, powder coatd.  
 Power Cable: H05RN-F 2\*1.0mm<sup>2</sup> L=0.3M ( Low voltage)  
                   H05RN-F 3\*0.75mm<sup>2</sup> L=0.3M ( High voltage)  
 H05RN-F 2\*0.75mm<sup>2</sup> power cable +H05RN-F 3\*0.5mm<sup>2</sup> signal cable  
 L=0.3M (DC24V RGB/RGBW, DMX512)  
 Operating Temperature: -20°C~40°C

**MOUNTING**

Details



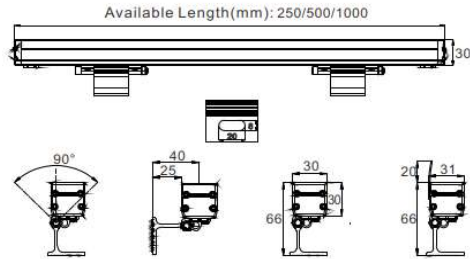
Name: HALINE B2 SF50

Code: W30x66W

**THORN**

Linear Wall Washer Light

<b>CE</b>	<b>RoHS</b>	CRI>80/90	IP 66	IK 08	$T_a$ -20 +40
-----------	-------------	-----------	-------	-------	------------------



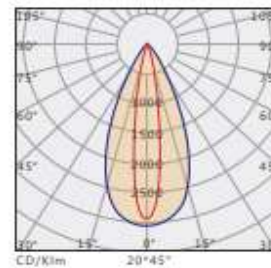
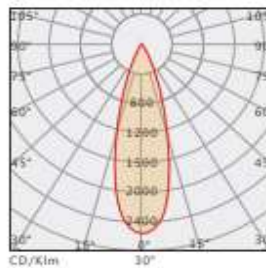
Physical Dimension(MM)

MODEL NO.	POWER	SYSTEM LUMEN	LED COLOR	BEAM ANGLE	INPUT VOLT	CONTROL
HALINE B2 SF50 W30x66W	12W	75 lm/w	Monocolor/DMX	30° Symmetrical Lens 20°45° Asymmetrical Lens	DC24V	DALI/0-10V Triac
HALINE B2 SF50 W30x66W	24W	75 lm/w	Monocolor			
HALINE B2 SF50 W30x66W	12W	30 lm/w	RGB 3in1 DMX512			
HALINE B2 SF50 W30x66W	12W	30 lm/w	RGBW 4in1 DMX512			

<b>FINISH</b>	<p>Housing: Extruded 6063 aluminum alloy profile, Electrostatic powder coated</p> <p>LED: CREE, OSRAM, EPISTAR LED</p> <p>Glass Cover: Step tempered glass. T= 4mm</p> <p>Lens: Optical Lens, efficiency≥85%</p> <p>Bracket: 6063# ALUMINUM, powder coat.</p> <p>Power Cable: H05RN-F 2*1.0mm<sup>2</sup> L=0.3M ( Low voltage) H05RN-F 3*0.75mm<sup>2</sup> L=0.3M ( High voltage)</p> <p>H05RN-F 2*0.75mm<sup>2</sup> power cable +H05RN-F 3*0.5mm<sup>2</sup> signal cable L=0.3M (DC24V RGB/RGBW, DMX512)</p> <p>Operating Temperature: -20 °C~40 °C</p>
---------------	--

**MOUNTING**

Optional Model/Details



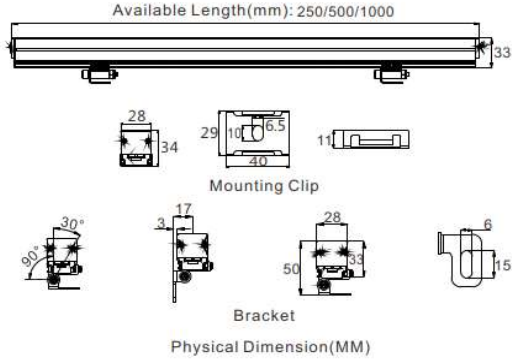
Name: HALINE B2 SF50

Code: W33W

**THORN**

Linear Wall Washer Light

CE	RoHS	CRI>80/90	IP 66	IK 08	T <sub>a</sub> -20 +40
----	------	-----------	-------	-------	---------------------------



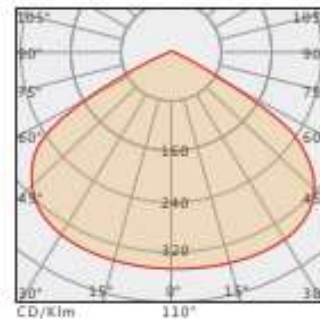
MODEL NO.	POWER	SYSTEM LUMEN	LED COLOR	BEAM ANGLE	INPUT VOLT	CONTROL
HALINE B2 SF50 W33W	12W	75 lm/w	Monocolor/DMX	110°	DC24V	DALI/0-10V Triac
HALINE B2 SF50 W33W		30 lm/w	RGB 3in1 DMX512			
HALINE B2 SF50 W33W		30 lm/w	RGBW 4in1 DMX512			

**FINISH**

Housing: Extruded 6063 aluminum alloy profile, Electrostatic powder coated  
 LED: CREE, OSRAM, EPISTAR LED  
 Glass Cover: Step tempered glass. T= 4mm  
 Lens: Optical Lens, efficiency≥85%  
 Bracket: 6063# ALUMINUM, powder coatd.  
 Power Cable: H05RN-F 2\*1.0mm<sup>2</sup> L=0.3M ( Low voltage)  
 H05RN-F 3\*0.75mm<sup>2</sup> L=0.3M ( High voltage)  
 H05RN-F 2\*0.75mm<sup>2</sup> power cable +H05RN-F 3\*0.5mm<sup>2</sup> signal cable  
 L=0.3M (DC24V RGB/RGBW, DMX512)  
 Operating Temperature: -20 °C~40 °C

**MOUNTING**

Details



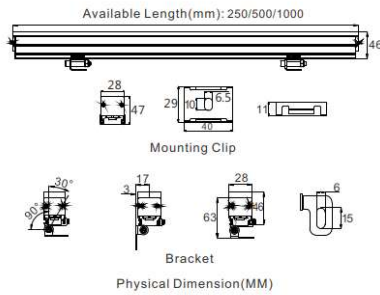
Name: HALINE B2 SF50

Code: W46D

**THORN**

Linear Wall Washer Light

CE	RoHS	CRI>80/90	IP 66	IK 08	T <sub>a</sub> -20 +40
----	------	-----------	-------	-------	---------------------------



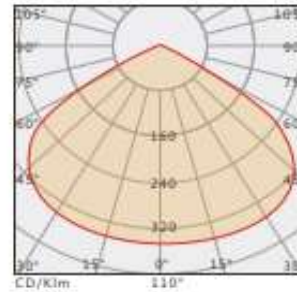
MODEL NO.	POWER	SYSTEM LUMEN	LED COLOR	BEAM ANGLE	INPUT VOLT	CONTROL
HALINE B2 SF50 W46D	12W	80 lm/w	Monocolor/DMX	110°	DC24V	DALI/0-10V Triac
HALINE B2 SF50 W46D		30 lm/w	RGB 3in1 DMX512			
HALINE B2 SF50 W46D		30 lm/w	RGBW 4in1 DMX512			

**FINISH**

Housing: Extruded 6063 aluminum alloy profile, Electrostatic powder coated  
 LED: CREE, OSRAM, EPISTAR LED  
 Cover: PMMA  
 Lens: Optical Lens, efficiency≥85%  
 Bracket: 6063# ALUMINUM, powder coat.  
 Power Cable: H05RN-F 2\*1.0mm<sup>2</sup> L=0.3M ( Low voltage)  
                   H05RN-F 3\*0.75mm<sup>2</sup> L=0.3M ( High voltage)  
 H05RN-F 2\*0.75mm<sup>2</sup> power cable +H05RN-F 3\*0.5mm<sup>2</sup> signal cable  
 L=0.3M (DC24V RGB/RGBW, DMX512)  
 Operating Temperature: -20°C~40°C

**MOUNTING**

Details



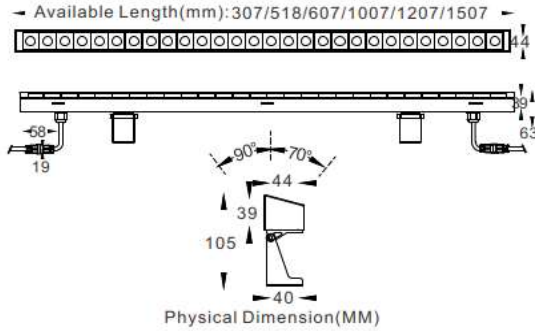
Name: HALINE B2 SF50

Code: W44W

**THORN**

Linear Wall Washer Light

	CE	RoHS	CRI>80/90	IP 66	T <sub>a</sub> -20 +40
--	----	------	-----------	-------	---------------------------



MODEL NO.	POWER	SYSTEM LUMEN	LED COLOR	BEAM ANGLE	INPUT VOLT	CONTROL
HALINE B2 SF50 W44W	28W	75 lm/w	2700K-6000K	10°/15°/25°	AC220V /DC24V	DALI/0-10V Triac
HALINE B2 SF50 W44W	10-15W			/35°/45°		
HALINE B2 SF50 W44W	42W	30 lm/w	RGB 3in1 DMX512	20°/30°/20°*45°	DC24V	
HALINE B2 SF50 W44W	50W	30 lm/w	RGBW 4in1 DMX512			

**FINISH**

Housing: Extruded 6063 aluminum alloy profile, Electrostatic powder coated  
 LED: CREE, LUMINUS LED  
 Glass Cover: Step tempered glass, T= 4mm  
 Lens: Optical Lens, efficiency≥85%  
 Bracket: 6063# aluminum, powder coatd.  
 H05RN-F 2\*0.75mm<sup>2</sup> power cable +H05RN-F 3\*0.5mm<sup>2</sup> signal cable  
 L=0.3M (DC24V RGB/RGBW, DMX512)  
 Operating Temperature: -20 °C~40 °C

**MOUNTING**

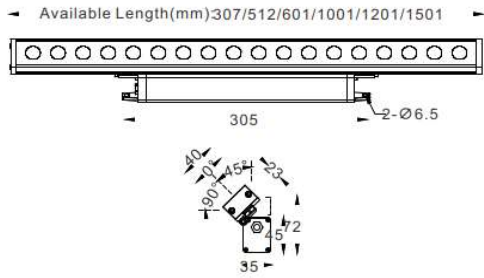


Name: HALINE B2 SF50

Code: W40W

**THORN**

	<b>CE</b>	<b>RoHS</b>	CRI>80/90	IP 66	T <sub>a</sub> : -20 +40
--	-----------	-------------	-----------	-------	-----------------------------



Physical Dimension(MM)

MODEL NO.	POWER	SYSTEM LUMEN	LED COLOR	BEAM ANGLE	INPUT VOLT	CONTROL
HALINE B2 SF50 W40W	28W	75 lm/w	2700K-6000K	10°/15°/25°	AC220V /DC24V	DALI/0-10V Triac
HALINE B2 SF50 W40W	10-15W			/35°/45°		
HALINE B2 SF50 W40W	42W	30 lm/w	RGB 3in1 DMX512	20°/30°/20°45°	DC24V	
HALINE B2 SF50 W40W	50W	30 lm/w	RGBW 4in1 DMX512			

**FINISH**

Housing: Extruded 6063 aluminum alloy profile, Electrostatic powder coated  
 LED: CREE, LUMINUS LED  
 Glass Cover: Step tempered glass. T= 4mm  
 Lens: Optical Lens, efficiency≥85%  
 Bracket: 6063# aluminum, powder coatd.  
 H05RN-F 2\*0.75mm<sup>2</sup> power cable +H05RN-F 3\*0.5mm<sup>2</sup> signal cable  
 L=0.3M (DC24V RGB/RGBW, DMX512)  
 Operating Temperature: -20 °C~40 °C

**MOUNTING**



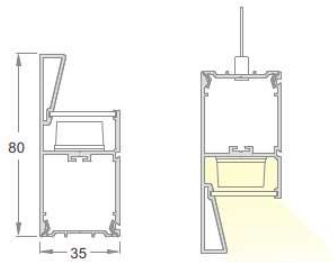
Name: HALINE B2 SF50

Code: W35W

**THORN**

Linear Wall Washer Light

CE	RoHS	CRI>80/90	IP 67	T <sub>a</sub> -20 +40
----	------	-----------	-------	---------------------------



Physical Dimension(MM)



MODEL NO.	POWER	SYSTEM LUMEN	LED COLOR	BEAM ANGLE	INPUT VOLT	SIZE	CONTROL
HALINE B2 SF50 W35W	32W	75 lm/w	2700K-6500K	15°/20°/18°*55° /18°*45°	24V DC	1200*35*80mm	1-10V/ PWM Triac/DMX

**FINISH**

*Customized length is available on request.*

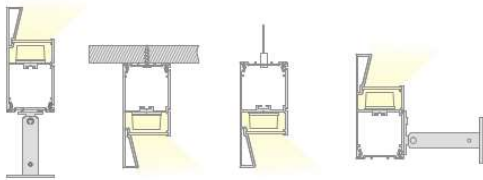
*Input voltage:24V DC*

*Power: 32W*

*CRI:≥90*

*Working Temperature:-40 °C~+45 °C three in one dimming function (0/1-10V DC or PWM signal or resistance)*

**MOUNTING**



Aluminum profile



Adjustable aluminum holder can be turned around 160°





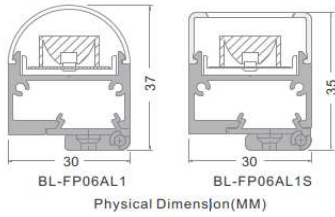
Name: HALINE B2 BM40

Code: W30

**THORN**

Flexible Wall Washer Light

	CE	RoHS	CRI>80/90	IP 67	T <sub>a</sub> -20 +40
--	----	------	-----------	-------	---------------------------

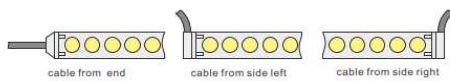


MODEL NO.	POWER	SYSTEM LUMEN	LED COLOR	BEAM ANGLE	INPUT VOLT	SIZE	CONTROL
HALINE B2 BM40 W30	19.2W	75 lm/w	2700K-6500K	20° / 30° / 40° / 55° / 20°*30°	24V DC	1050*30*37mm	1-10V/ PWM Triac/DMX
HALINE B2 BM40 W30	38.4W					2050*30*37mm	
HALINE B2 BM40 W30	19.2W					1050*30*35mm	
HALINE B2 BM40 W30	38.4W					2050*30*35mm	
HALINE B2 BM40 W30	19.2W	75 lm/w	2500K-6500K	70°*110°	24V DC	1125*30*37mm	
HALINE B2 BM40 W30	38.4W					2200*30*37mm	
HALINE B2 BM40 W30	9.2W					1125*30*35mm	
HALINE B2 BM40 W30	38.4W					2200*30*35mm	

**FINISH**

Optic flexible wall washer LED strip - Ip67  
 Power:19.2W/m(Symmetric),16W/m(Asymmetric)  
 Cuttable  
 Application: suit for commercial lighting, wall washing illumination  
 Working Temperature:-40 °C~+45 °C  
 Net Weight:240g/mete (rSymmetric)  
 220g/mete (rAsymmetric)  
 For outdoor application, must be used together with aluminum housing for heat release.suit for class 2 power unit, maximum connected power not more than 100W

**MOUNTING**



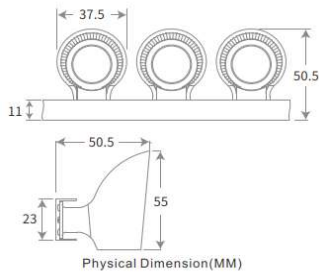
Name: HALINE B2 BM40

Code: W50.5

**THORN**

Flexible Wall Washer Light

	CE	RoHS	CRI>80/90	IP 67	T <sub>a</sub> -20 +40
--	----	------	-----------	-------	---------------------------



MODEL NO.	POWER	SYSTEM LUMEN	LED COLOR	BEAM ANGLE	INPUT VOLT	SIZE	CONTROL
HALINE B2 BM40 W50.5	8W	75 lm/w	2700K-6500K	15°/20°/30° /20°*40°/20°*50°	24V DC	300*55*50.5mm	1-10V/ PWM Triac/DMX
HALINE B2 BM40 W50.5	16W					600*55*50.5mm	
HALINE B2 BM40 W50.5	24W					900*55*50.5mm	
HALINE B2 BM40 W50.5	32W					1200*55*50.5mm	
HALINE B2 BM40 W50.5	5W	30 lm/w	RGB/RGBW	20°/35°/45°/55° /20°*45°		300*55*50.5mm	
HALINE B2 BM40 W50.5	11W					600*55*50.5mm	
HALINE B2 BM40 W50.5	15W					900*55*50.5mm	
HALINE B2 BM40 W50.5	22W					1200*55*50.5mm	

**FINISH**

Flexible, easy to fix, 24V DC, power:32W in 1200mm length  
 22W in 1200mm length (RGB/RGBW)  
 Maximum 1200mm length, it is an ideal product for indoor and outdoor architectural lighting project  
 Working Temperature:-40 °C~+45 °C  
 Net Weight:1048g/1.2meter suit for class 2 power unit, maximum connected power not more than 100W

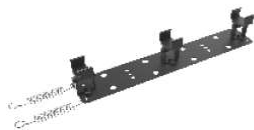
**MOUNTING**



adjustable stainless mounting clip



for tree fixing mounting clip



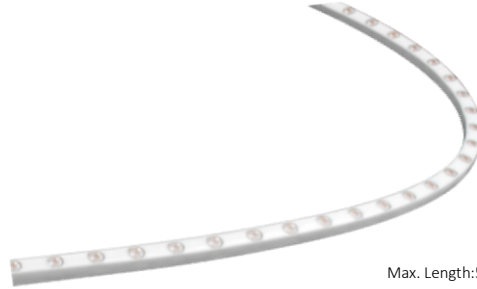
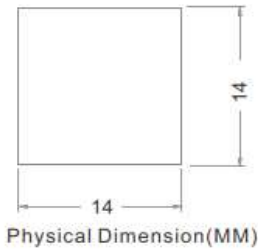
Name: HALINE B2 BM40

Code: R14x14

**THORN**

Flexible Wall Washer Light

	CE	RoHS	CR>80/90	IP 67	T <sub>a</sub> -20 +40
--	----	------	----------	-------	---------------------------

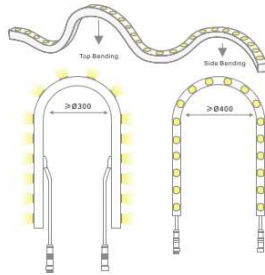


Max. Length:5.088M

MODEL NO.	POWER	SYSTEM LUMEN	LED COLOR	BEAM ANGLE	INPUT VOLT	SIZE	CONTROL
HALINE B2 BM40 R14x14	5W	75 lm/w	2700K-6500K	25°/45°	24V DC	424*14*14mm	1-10V/ PWM Triac/DMX
HALINE B2 BM40 R14x14	12W					1060*14*14mm	
HALINE B2 BM40 R14x14	24W					2120*14*14mm	
HALINE B2 BM40 R14x14	60W					5088*14*14mm	

<b>FINISH</b>	<p>Power:12W/1.06m                  Maximum 5.088 meters                  Application: suit for commercial lighting, wall washing illumination                  Installation:surface mounting                  Working Temperature:-40 °C~+45 °C                  Net Weight:286g/1.06meter suit for class 2 power unit,maximum connected power not more than 100W</p>
---------------	--

**MOUNTING**



adjustable stainless steel holder can be turned around 180°

Stainless steel mounting clip  
Self-tapping screws



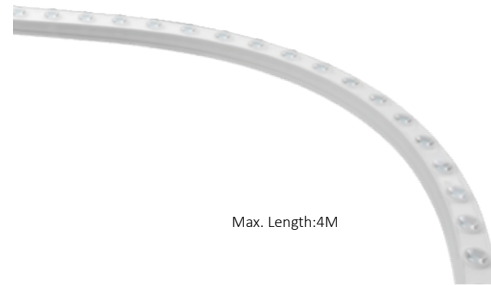
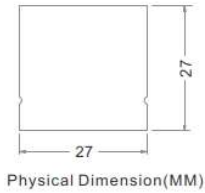
Name: HALINE B2 BM40

Code: R27X27

**THORN**

Flexible Wall Washer Light

	CE	RoHS	CRI>80/90	IP 67	T <sub>a</sub> -20 +40
--	----	------	-----------	-------	---------------------------

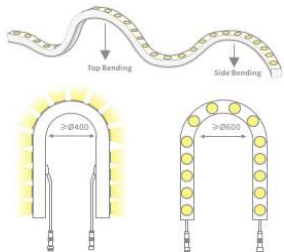


MODEL NO.	POWER	SYSTEM LUMEN	LED COLOR	BEAM ANGLE	INPUT VOLT	SIZE	CONTROL
HALINE B2 BM40 R27X27	11.5W	75 lm/w	2700K-6500K	15°/20°/30° /20°*40°/20°*50°	24V DC	500*27*27mm	1-10V/ PWM Triac/DMX
HALINE B2 BM40 R27X27	23W					1000*27*27mm	
HALINE B2 BM40 R27X27	46W					2000*27*27mm	
HALINE B2 BM40 R27X27	92W					4000*27*27mm	
HALINE B2 BM40 R27X27	11.5W	30 lm/w	RGB/RGBW	25°/40°/50°/25 * 45° /20*45°		500*27*27mm	
HALINE B2 BM40 R27X27	23W					1000*27*27mm	
HALINE B2 BM40 R27X27	46W					2000*27*27mm	
HALINE B2 BM40 R27X27	92W					4000*27*27mm	

**FINISH**

Power:23W/m  
 Maximum 4 meters  
 Application: suit for commercial lighting, wall washing illumination  
 Installation:surface mounting  
 Working Temperature:-40°C~+45°C  
 Net Weight:865g/meter suit for class 2 power unit,maximum connected power not more than 100W

**MOUNTING**



adjustable stainless steel holder can be turned around 180°

Stainless steel mounting clip  
Self-tapping screws



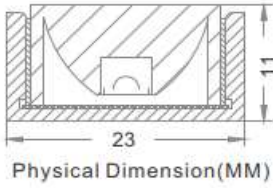
Name: HALINE B2 BM40

Code: R23X11

**THORN**

Flexible Wall Washer Light

	CE	RoHS	CR>80/90	IP 67	T <sub>a</sub> -20 +40
--	----	------	----------	-------	---------------------------



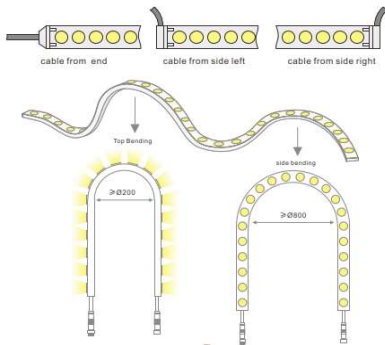
Max. 5M length / Unit

MODEL NO.	POWER	SYSTEM LUMEN	LED COLOR	BEAM ANGLE	INPUT VOLT	SIZE	CONTROL
HALINE B2 BM40 R23X11	9.6W	75 lm/w	2700K-6500K	20°/30°/40°/55° /25°*40°	24V DC	500*23*11mm	1-10V/ PWM Triac/DMX
HALINE B2 BM40 R23X11	19.2W					1000*23*11mm	
HALINE B2 BM40 R23X11	38.4W					2000*23*11mm	

**FINISH**

*Sealed with fully transparent and waterproof materials, soft and bendable*  
*Application: suit for commercial lighting ,wall washing illumination*  
*Installation : surface mounting*  
*Length: 5000mm/reel max interconnected wattage is 100W.*  
*Working Temperature:-40 °C~+45 °C*  
*Net Weight:268g/meter suit for class 2 power unit,maximum connected power not more than 100W*

**MOUNTING**



Stainless steel mounting clip  
Self-tapping screws

